

10 Shortcut Keys you must know in Kingsoft Presentation

Kingsoft Presentation has built-in shortcut keys which can help you create presentations faster and navigate through the slides easier. Some of the key combinations are also similar with the Microsoft Office command executions.

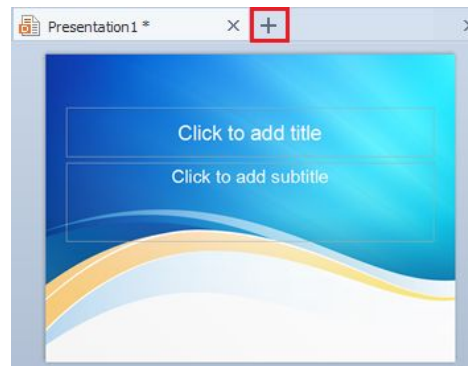
[Click here](#) to know the 10 shortcut keys in Kingsoft Presentation.



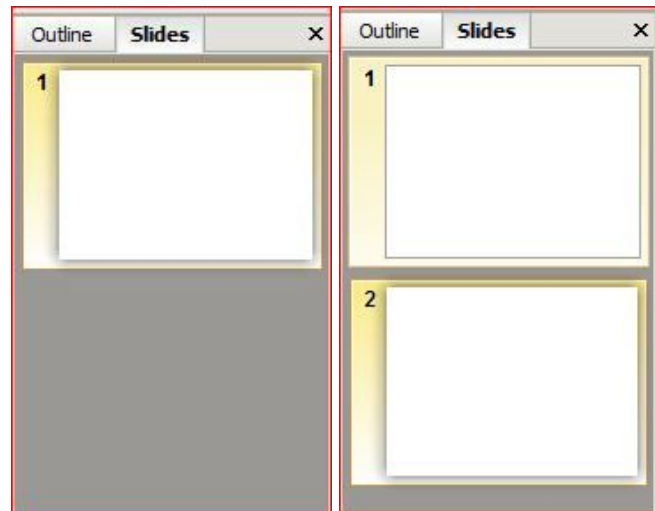
Prepared by Information Security and IT Governance Division of ICT.
Productivl.T.y showcases tips & tricks on various office and branch applications.

10 Shortcut Keys you must know in Kingsoft Presentation

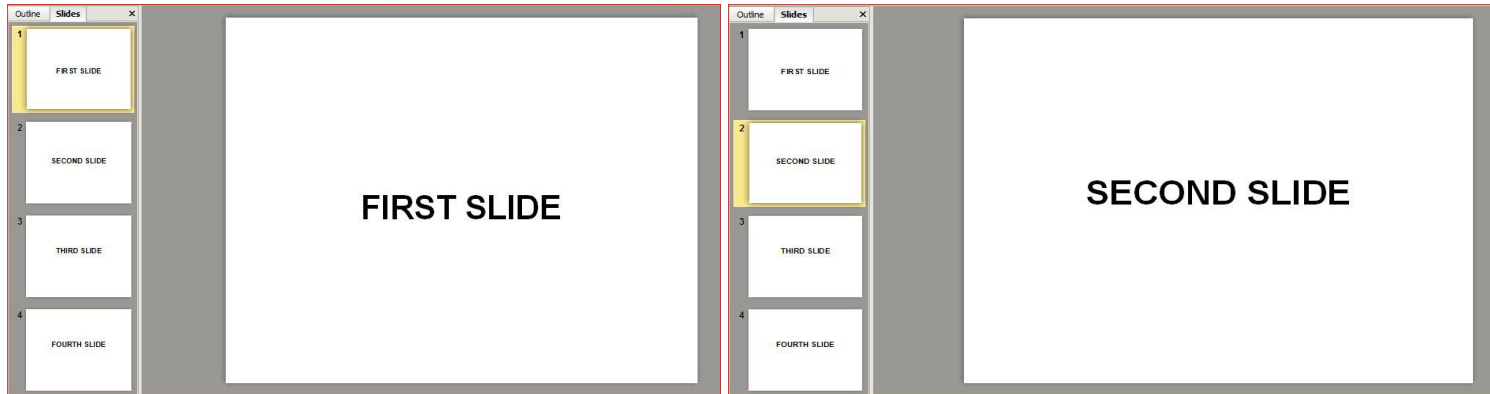
1. To create a New Blank File, press **Ctrl+N**



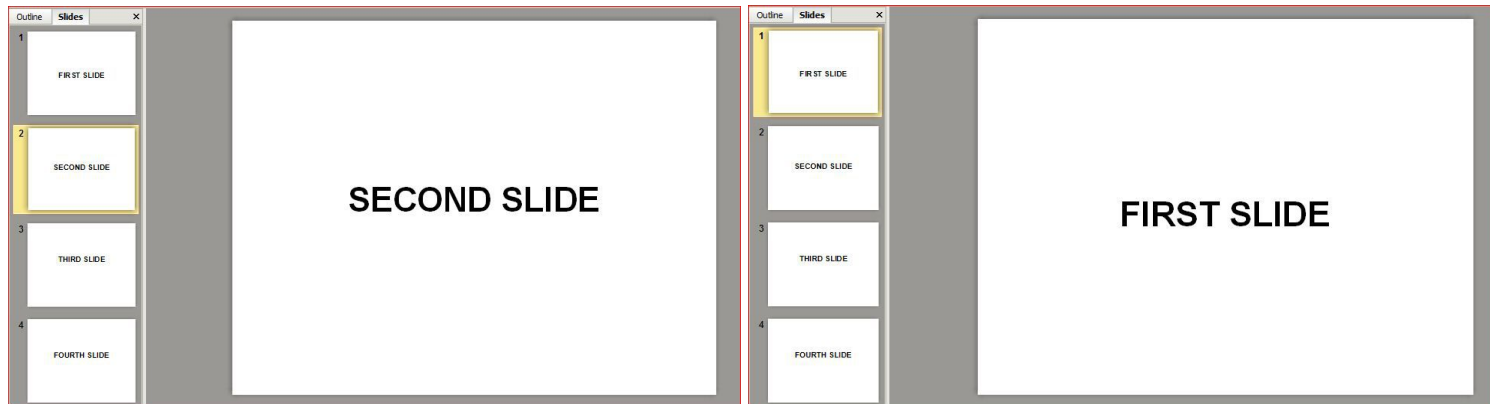
2. To create a New Slide, press **Ctrl+M**



3. To switch to Next Slide, press Page Down



4. To go back to Previous Slide, press Page Up



5. To apply Black Screen when playing slideshow, press Ctrl+B



6. To apply **White Screen** when playing slideshow, press Ctrl+W



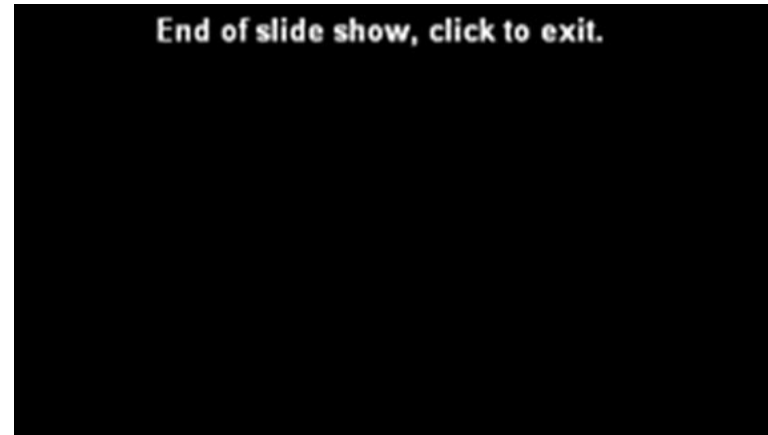
7. To play the slide show **From Beginning**, press F5



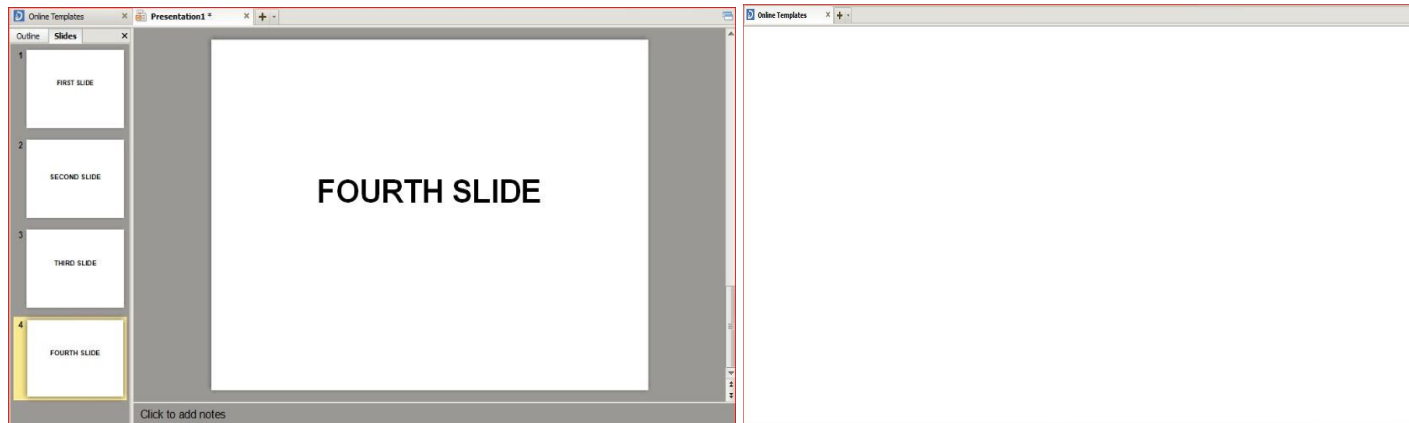
8. To start slide show from the **Current Slide**, press **Shift+F5**



9. To **End Slide** show, press **Esc**



10. To Close the current presentation window, **Ctrl+W**



We value your feedback. Please help us improve our ProductivI.T.y releases by filling out the **"Serbisyong Bida"** online survey form. You may also email your comments and suggestions to ict-process@pjhuillier.com. [Click here](#) for back issues of ProductivI.T.y in MyLink.